

MISSION & PROSPECTUS

Charity overview and projects



Presented to
potential partners

Presented by
A New Way

Table of Contents

3	A New Way	16	Lewis Jonker
4	Audio Bible	17	Governance & Leadership
7	Sundown Sessions	18	Budget
11	Community Chaplaincy	20	Statement of Faith
13	Itinerant Ministry	21	Parting Note



A New Way.

A New Way is a Christian non-profit. Our mission is simple: to help the community, to be charitable, and to encourage hope & faith. We are based on the Central Coast, NSW.

We aim to achieve our mission through the production of thought-provoking podcasts, music, media, and in-person events that seek to bring people closer to God and each other in authentic and meaningful ways... in new ways.

We are not affiliated with any particular denomination, instead we work outside of traditional frameworks in order to reach a wider audience. As an interdenominational ministry, our passion for Jesus and commitment to authenticity drive everything we create and do. We believe in providing a new and innovative approach to "be the Church". We also endeavour to provide the global Church with new resources.

We are pursuing four initial projects:

1. **Audio Bible:** An audio Bible in podcast format that is accessible to youth and young adults. We aim to partner with relevant christian non-profits in order to produce this audio Bible.
2. **Sundown sessions:** Weekly gatherings/services that are designed to be more inclusive and accessible to some than traditional church services. There is no need for a building or liturgy, but instead a focus on creating community through music, a short christian talk, and safe atmosphere.
3. **Community chaplaincy:** A weekly Bible study that is accessible to the unchurched and the de-churched, in addition to regular pastoral care and chaplaincy support.
4. **Itinerant ministry:** Itinerant ministry within churches and schools. This initiative will support the work that local churches are already doing and assist congregations that have pastoral vacancies.

We aim to partner with relevant Christian non-profits, churches, denominations and individual donors in order to bring these projects to life.

A New Way is accountable to a governance board, and will employ staff to implement these projects.

The Audio Bible

New generations need new ways to engage with the Word of God!

Only 23% of teenage girls and 15% of teenage boys read any form of literature. Furthermore, research from the American Bible Society shows that only 3% of christian youth read the Bible every day. In contrast, 95% of youth engage with social media such as YouTube and podcasts on a regular basis!

We need to put the good news in front of young people where they'll get it - an audio Bible available via podcast and Youtube.

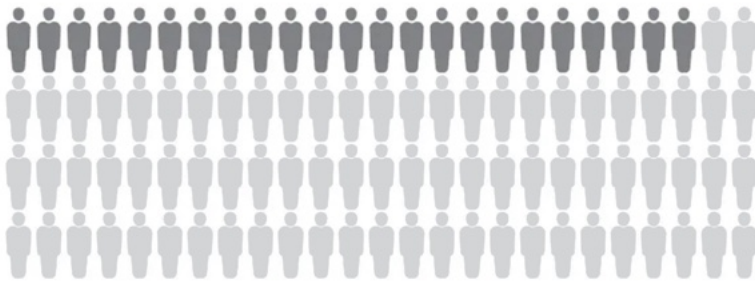
'The Bible App' currently offers the most accessible audio Bible, yet its monotone style is not engaging . Even the best audio Bibles are read by seniors, and are often older translations such as the KJV. The Word of God is living! It is the source of truth, light and life. It should be read with energy and passion. All generations should be excited to engage with it!

The most similar project currently available via a podcast is by "Streetlights", an American organisation which reads the New Testament over hip-hop music. However, Australian youth are are much more likely to engage with a young Australian voice.

Lewis Jonker recently read the 'sermon on the mount' at Narara Valley Baptist Church, and received this feedback from a congregant: *"You bravely cast a personal dream at our feet, your dream of recording the Bible. Then you plagiarized a famous sermon and proceeded to read it in a way that was beyond all imaginable comparison. In all my years of listening to God's Word I have never heard it expressed in such a way, it was mesmerising and inspiring, it was simply mind blowing. Lewis, I'm not sure of the process or the cost or the time or... or... or... but this is something I believe you must do, please investigate it further and if the financial aspect of it can be achieved through sponsorship then SIGN ME UP!"*

We believe an audio Bible made available via podcast and on YouTube will impact the next generation and see lives transformed by the Word of God.

The Stats



Only 23% of young females read regularly (secular or spiritual).
(Edith Cowan University Study)



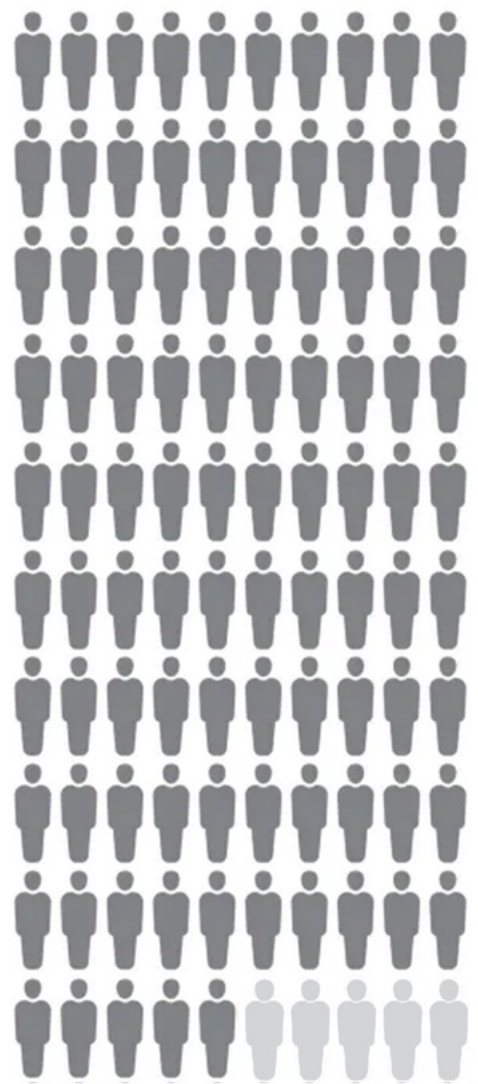
Only 15% of young males read regularly (secular or spiritual).
(Edith Cowan University Study)



Only 3% of young christians read the Bible daily.
(American Bible Society)



40% of Australian 15 year olds are unable to read proficiently.
(Programme for International Student Assessment & NAPLAN)



95% of Teenagers engage with YouTube, social media & podcasts.
(Pew Research Centre)

Practical Outworking

The audio Bible podcast will be recorded over the course of 2024/2025.

The narrator will dedicate 0.2FTE, spending 8 hours per week recording, editing, producing, exporting and publishing each 30-60 minute podcast episode. The podcast will also feature crucial introductions and occasional historical commentary, requiring research and dedicated recording efforts. The podcast will be recorded in phases, starting with the New Testament.

The Audio Bible will use a variety of reputable translations, ensuring that we follow all copyright guidelines.

We have acquired the equipment needed to produce high quality podcasts, including: 2021 MacBook Pro, Shure Sm7b microphone, Logic Pro DAW recording software, H6 Zoom recorder/interface, Audio Technica headphones, and various other pieces of recording equipment. This equipment valued at over \$7000, has been donated to A New Way for the duration of the project.

Reach & Partnership

An article by Medium wrote *"In recent years, podcasting has exploded in popularity, becoming one of the fastest-growing mediums for consuming content."*

The potential reach for an audio Bible available via podcast, exceeds any projection for alternate digital downloads or physical format. Podcasts are a freely available recognisable format that supports timestamps. Show notes are also available. Furthermore, they are easily shared and promoted.

Our strategic approach involves forging partnerships with established Christian non-profits that are already engaged in youth and high-school outreach to integrate the audio Bible into existing programs and activities.

By equipping educators with a compelling and contemporary medium, we aspire to create an atmosphere where young minds can explore their spirituality and develop a deeper understanding of the Gospel. We aim to instil a renewed sense of curiosity and connection to the Gospel among youth, empowering them to seek and embrace the truth for themselves. Through this collaborative effort, A New Way seeks to address the gaps left by the diminishing focus on religious education and the insufficient funding for chaplaincy services.

Sundown Sessions

Society is looking for new ways to engage in Christian community!

The decline of Christianity in Australia has been evident in recent years. According to census data, various traditional Christian denominations, such as Anglican, Catholic, Uniting, Presbyterian, Reformed, Lutheran, Pentecostal, Baptist, and Churches of Christ, have all experienced a decline in attendance per capita.

Despite this decline within mainline denominations, "non-denominational Christianity," grew within that census period 2016-2021 by 12.4%, exceeding population growth. This category encompasses individuals expressing a Christian affiliation without specifying a particular denomination. This shift towards non-denominational Christianity could signify a departure from conventional denominational structures, signalling a trend towards a less institutionalised approach to faith.

Furthermore, Statistics reveal that only 7% of Australians regularly attend Church Services. However, 61% of Australians believe in a higher power, this reveals that 54% are open to the idea of God, but are not part of a church community. A New Way believes in creating an inter-denominational service where the 54% feel comfortable to explore faith.

Mainstream churches and religious institutions serve an important purpose and offer a sense of community and connection for many people. However, many find it difficult to connect with these institutions due to hierarchies, old service styles, performative religion, and codes of conduct that can restrict volunteers. Sadly, many people have also faced spiritual abuse within these institutions and are unable to attend them due to trauma. Furthermore, the institutional church relies on the maintenance of physical buildings which has led to questions about the financial sustainability of modern contemporary churches. Buildings are certainly convenient, but they may no longer be a necessity.

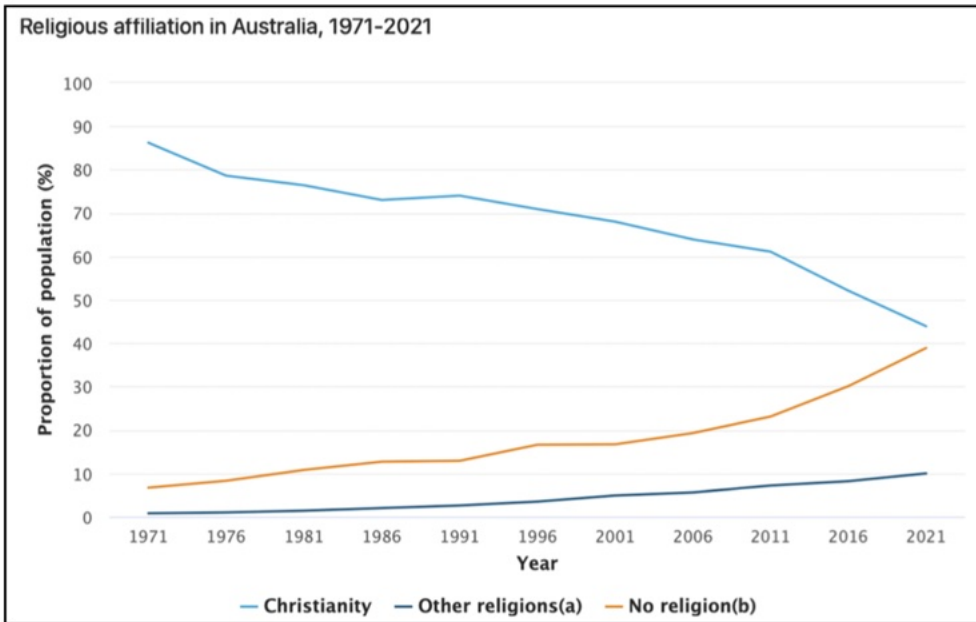
"If you always do what you've always done, you always get what you've always gotten".

"Insanity is doing the same thing and expecting different results". These familiar quotes speak of the same premise - to achieve a different outcome, you must change the methodology.

"Ecclesia semper reformanda" is a latin term derived from St. Augustine. It means, *"The church must always be reformed"* and it is used by theologians to describe how the church must continually re-examine itself.

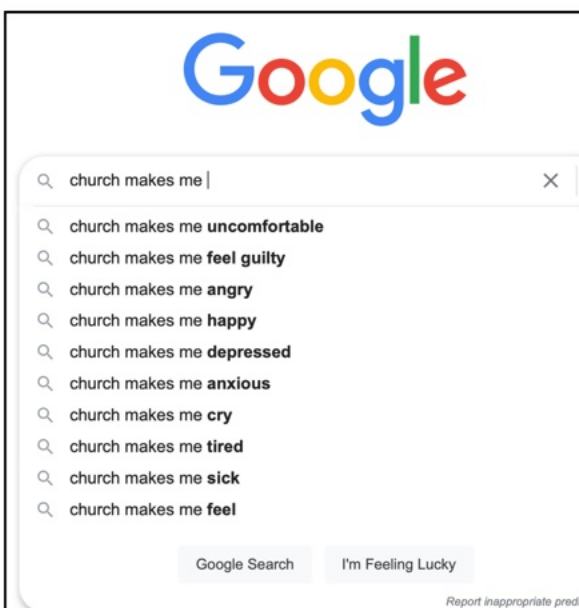
It is important to explore new ways of 'being the church' that are accessible, inclusive and financially sustainable. We believe our Sundown Sessions provide a new way.

The Stats



- Top three negative influences for non-Christians cold to Christianity:**
1. Church abuse (83%)
 2. Church is outdated (83%)
 3. Judging others (83%)

McCrinkle Research



A quick google search reveals how the majority of people feel attending institutional churches.



Only 7% of Australians attend church regularly/weekly.
NCLS Research (Statistic Exaggerated*)

*To put this into perspective, the Central Coast, with a population of 349,173, would theoretically have 24,442 individuals attending Church regularly if the 7% statistic held true. However, with 83 institutional churches on the Central Coast, the average church size would need to be 294. Logically, this seems implausible, given that the median congregation size is typically around 50.



61% of Australians believe in a higher power (NCLS Research)

Practical Outworking

This project will began is June 2024. We have one employee who prepares and facilitates the Sundown Session. Providing pastoral care and discipleship to members of this specific faith community is also a key element of our ministry.

This ministry is committed to experimentation and is willing to adapt to the needs of the community. We aim to discover the best way to reach people who wouldn't walk into a traditional church, without alienating the people who would.

As of November 2024, we have 73 on our attendee list. These individuals come from a variety of backgrounds, including a significant amount who have never engaged in a faith community, or have been distant from their faith for many years.

There are a few experimental distinctives that make these Sundown Sessions unique. While these distinctives may evolve over time, the purpose and mission of A New Way will always remain the same. In the end, our goal isn't just to provide a service - we're building a community. What matters most is the core values, not just the practical aspects. We aim to foster a culture of freedom, authenticity, and a supportive space for spiritual growth that is free from shame and pressure. Everyone, regardless of background, education, or age, is welcome here. Our aim is for all to discover Christ and grow to be more like Him.

Experimental distinctives:

1. Inter-denominational ministry

We are purposely not formally affiliated with any particular denomination, we work outside of traditional frameworks in order to reach a wider audience. A New Way is committed to inter-denominational ministry, meaning we prefer not to be legally and financially bound to any specific denomination. However, we value collaboration with denominations for Kingdom purposes; we are especially open to assistance from established churches who understand the vision of A New Way and are able to freely provide support. Some members of our board are actively involved within denominations, showcasing our openness to working together harmoniously. A New Way has a board of directors in order to keep our organisation and its staff accountable. This includes financial, moral and ethical accountability.

2. No “Pastors” or formal titles.

At A New Way there are no honorific titles or designations. Names such as 'Priest', 'Pastor', and 'Reverend' are simply not used. However, there are staff members who facilitate teaching and events. These staff members have gone through rigorous training and assessments, and theological study. They are also qualified to provide chaplaincy and pastoral care. Cross-cultural missionary, Cynthia Anderson, writes *“Titles emphasize the distinction between ministers and members... titles discourage “ordinary believers” from doing the work of the ministry... titles make us susceptible to pride... De-emphasising titles gives people permission to relate to you as a human being and fellow disciple, not as a person in a position.”*

3. Mid-week

The Sundown Sessions will be held mid-week afternoons, challenging the notion that church must be on a Sunday. Our aim is to enhance accessibility for those working weekends or engaged in community sports, and to also allow time for family and rest on weekends.

4. Casual venues

The Sundown Sessions will be hosted in a casual location. We are currently meeting in a warehouse on the Central Coast that is shared with a local business. These events are designed to be more inclusive and accessible to some than a traditional church building. The absence of a building also reduces the expense of buying and owning a property.

5. A casual liturgy (service style)

The Sundown Session will be *organised chaos*. These services will strike a balance between careful planning for a smooth and safe service, while also allowing ample room for spontaneity and freedom. Each Sundown Session will incorporate communion, a brief Christian teaching, and community connection. However, these elements won't be rigidly scheduled, offering flexibility in factors such as the number of songs performed or the amount of time spent in community engagement.

6. No obligations

The practical elements of the service (eg. chair setup) will be facilitated by paid staff members. There will be no formal rosters, but we will provide natural opportunities for individuals to serve and contribute in ways that align with their talents, gifting and passions.

Community Chaplaincy / Study

The un-churched need new ways to learn about God!

A New Way will host weekly Bible studies designed specifically for individuals who may find traditional church settings or structured connect groups less comfortable. These sessions will take place in a casual and relaxed environment, with studies crafted in an evangelistic tone.

According to research by the Barna Group, 47% of respondents connected to Christianity feel that the church "cannot answer their questions" or address their spiritual doubts. In response, our studies aim to provide a different approach. Rather than assuming the questions attendees have, we invite them to ask the questions on their mind.

These studies will embrace an unstructured and unhurried format. We prioritize creating a space where religion is not forced upon anyone. Instead, our studies invite participants into safe discussions where judgment is absent, ensuring everyone feels comfortable and valued, regardless of their level of familiarity with the subject matter.

According to McCrindle Research, more than half of Australians (52%) are open, to some extent, to changing their religious views given the right circumstances and evidence, but many of these individuals do not have a place to explore this belief. It's time to provide a place for them. Any participant will also be able to engage in further discipleship and find support via community chaplaincy offered by A New Way.



47% of young people connected to Christianity say the Church cannot answer their questions. (Barna Research)



52% of non-Christians are open to changing their religious views (McCrindle Research)

Practical Outworking

This project will begin in Term 3, 2024 and will require an employee to work 0.2FTE, spending 8 hours per week writing and conducting the study. Time will also be utilised in chaplaincy and one-to-one discipleship. Furthermore, all studies will be recorded live and released in podcast format, making each session timeless.

Outcome 1: The midweek study will be hosted in a variety of casual locations such as cafes, hospitality venues or private residences. The study will be promoted via social media and word of mouth with a goal of reaching 20-50 individuals.

Outcome 2: Recognising the diverse spiritual needs of the attendees, there will be a deliberate focus on providing pastoral care, chaplaincy services, and opportunities for discipleship. We will ensure that each participant receives the necessary support and encouragement as they navigate their unique paths. Participants will also be invited to the Sundown Sessions as a natural next step.

Outcome 3: There will be a focus on providing creative opportunities for people to connect. Such as music groups for the community & study spaces for students.

We recognise the benefit of partnering with chaplaincy and community support organisations. Through these collaborations, we aim to contribute to their ongoing efforts, extending assistance to their existing clientele while reaching out to new individuals seeking spiritual guidance and community engagement.

We will leverage social media advertising and word of mouth as an effective and cost-efficient way of promoting this initiative. We will also approach local christian radio stations to promote this project.

Evan Lawrie will help facilitate community Chaplaincy. Evan holds an Advanced Diploma in Biblical Studies which he completed in New Zealand in 2005. Evan spent 5 years working full time as an associate pastor within a local church in various spaces of ministry within the church and community (Churches of Christ). In recent years, Evan has worked as a youth mentor facilitating Creative Mentoring Programs across community spaces, juvenile justice centres, schools, refuges, youth centres and organisations across the country with 'Musicians Making A Difference'.

Itinerant Ministry

"Faith comes by hearing, and hearing by the Word of God".

Large suburban churches often benefit from a wealth of skilled preachers with effective communication and theological training. Unfortunately, this is not the case for many churches, particularly in regional areas, where finding ministers to fill the pulpit on Sundays is a significant challenge.

The annual report from the Baptist Association of NSW/ACT for 2020 revealed that 54 Baptist churches in NSW lacked a senior minister. Among them, only 13 were successful in appointing a new leader, leaving 41 congregations still searching for a pastor. Although the number of vacancies has decreased in 2023, the issue persists. In the Anglican Diocese of Bathurst, 12 out of 28 parishes currently lack ministers. Meanwhile, across Australia, 65 Lutheran communities are actively seeking pastors. Yet the projected number of graduates from the Australian Lutheran College (ALC) in the pastoral ministry stream falls far short of meeting this demand, with only five students expected to graduate in the next two years. The ALC anticipates 129 vacancies by 2029, potentially leading to the closure of numerous congregations.

The overarching problem is evident - an ongoing "pastoral drought". While some denominations are proactively training ministers, the current shortage needs immediate solutions.

Temporary relief could come from travelling ministers, offering crucial support and delivering Bible-based preaching to congregations in need. These communities are not just seeking pastors; they are longing for hope, vision, and inspiration - qualities that a traveling evangelist can provide.

Moreover, youth groups and schools across Australia are facing a pressing demand for effective communicators who can engage with the crucial age group they serve. While there are undoubtedly many skilled communicators, the specific expertise required for effective youth engagement is often lacking. It is not a matter of shortage in good communicators overall. Rather, the challenge lies in finding individuals who specialise in effectively connecting with the youth demographic. The potential for impact is vast, and the demand far exceeds the current availability of communicators tailored to the unique needs of this age group.

Practical Outworking



A New Way is able to offer itinerant ministry from May 2024. However, a few steps will need to occur in order to fulfil the mission.

Developing partnerships: Creating strong partnerships is a cornerstone of our itinerant ministry. Working closely with denominations, we aim to build a unified approach in addressing pastoral shortages. We must then engage with local churches and schools in order to understand the specific needs of the communities we work within.

Strategic scheduling: Efficient scheduling is key to deploying our ministry effectively, ensuring to prioritise churches with critical vacancies. Within regional areas, significant time could be spent in one location; for example, an itinerant minister could speak at a school on Friday, a youth group Friday evening, a young adult breakfast on the Saturday, and a church on Sunday.

Content development: The heart of our ministry lies in creating compelling content for sermons and presentations. Employing experienced communicators ensures a balance of theological depth and practical relevance. Sermons can address a congregation's specific challenges, and offer hope and inspiration. For youth engagement, content is tailored to resonate with their concerns, incorporating relatable examples and real-life applications of biblical principles. Consistency and adaptability are key to aligning each presentation with the unique context of the community.

Evaluation and improvement: Continuous evaluation is crucial to understanding our impact and making improvements. Clear success metrics, including feedback from churches and communities, guide our assessment.

Reach & Partnership

The need for itinerant speakers is clear, especially in churches that are facing pastoral vacancies and are in need of a fresh perspective.

A New Way focuses on forming strong partnerships. We aim to closely collaborate with denominations and associations, offering our services to assist their churches. When denominations extend our services to their affiliated churches, it's a win-win – there is benefit for the denomination, the local church, and the kingdom.

We are also exploring partnerships with non-profit organisations who are involved in school ministry. Recognising the crucial role of schools in our communities, A New Way aims to share our skilled speakers as a valuable resource. Through collaboration, we hope to make a positive impact in both churches and schools.

Our belief is that success comes through teamwork. A New Way envisions working with denominations and non-profits.



Our staff have experience working across a variety of denominations and organisations.



And experience working within many schools.

Lewis Jonker

DIRECTOR

Lewis Jonker (BTh. DipMin. CHC42315) is a speaker, storyteller, preacher and poet. He has 12 years of experience in vocation ministry, working across a variety of schools as a chaplain, and presenting seminars at 34 schools Australia wide. He has been the Associate Pastor at Narara Valley Baptist Church for 6 years, but will be leaving this role in May 2024 to pursue Gods calling to invest into “A New Way” full-time.

In Lewis’ role as Associate Pastor, he oversaw the youth ministry which grew to an average attendance of 100 individuals and also led a successful evening service.

Lewis is a natural communicator and has partnered with a variety of denominations, churches and schools. He has also completed ‘Trinity College’ Shakespeare and drama exams, and attended a variety of NIDA courses to develop his communication style.

Lewis loves KFC, jetskis and poetry.



Governance & Leadership

A governance and legal structure is incredibly important for any non-profit organisation.

We intend to establish a management team to keep the organisation and its staff accountable. The management team will focus on legal compliance and staff accountability. This team will also include representatives from any partner organisations.

The management team will work alongside the 'broader team' which will concentrate on the non-profit's vision, projects, and operational aspects. This team will include members of the management team as well as key stakeholders in the mission of A New Way.

Management Team & Advisors



Grant & Sharon Booth

Grant and Sharon have been deeply involved in local church ministry their entire lives. Grant has experience leading and managing church music teams within the ACC, and Sharon is professional psychologist.



Ted Bell

Ted was a senior human resources manager at BHP Engineering until he retired. In his retirement he has worked as an associate pastor and consultant at a variety of churches.



Kylie Courtney

Kylie is deeply passionate about the vision of A New Way. She has extensive experience in business, running a successful company alongside her husband on the Central Coast.



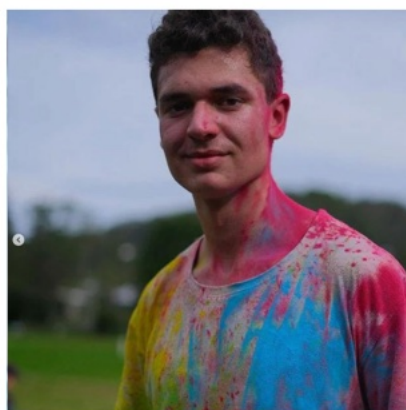
Dr. Neil Harris

Neil is a local counsellor with significant expertise with pastoral supervision. In the past Neil was the head of the counselling department at Morling College.



Reverend Craig Corkill

Having been in pastoral ministry for 29 years, Craig's experience is a valuable asset to A New Way. Craig is currently an Associate Director at the Baptist association of NSW & ACT.



Dylan Bladergreon

Dylan is our youth advocate and ambassador. Dylan has exceptional leadership capacity.

Budget

A New Way will be financially sustained through the generous support of partner organisations, individual donors and advocates who share our vision. In its initial phases, Narara Valley Baptist Church (NVBC) has offered to provide back-end administrative support. This will include holding a separate bank account on behalf of A New Way, and facilitating payments of any wages or expenses. This will ensure maximum financial accountability until A New Way is able to establish itself as an incorporated association within 6-12 months.

Initially there will be three distinct income streams:

1. **Launch fund** - A launch fund will be established in May 2024. Donors will be able to give anonymously to a bank account held by NVBC on behalf of A New Way.
2. **Local partnerships** - Partner organisations and non-profits have the opportunity to play a crucial role in the realisation of our project by considering partial or full funding. We recognise that there are diverse avenues for collaboration, and the partner organisation can opt for a nuanced approach based on their preferences and operational strategy.
3. **Ongoing donations** - Individuals may choose to set up regular direct debit transfers as part of their ongoing commitment to A New Way.

We are also open to partnerships with denominations and organisations that are willing to provide "in-kind" services, such as production equipment. When A New Way becomes an incorporated entity, this will open the door to additional methods of funding such as grants.

Our goal is to obtain adequate funding to support a staff equivalent to 0.8FTE. This allocation of hours may be divided among multiple employees or concentrated in a single individual. Nonetheless, if we do not reach our financial target, Lewis has pledged to volunteer his time until A New Way achieves financial stability. As A New Way grows there will be opportunity to increase staffing. Similarly, surpassing income targets miraculously would empower the organisation to allocate resources towards enhancing female staff representation, providing additional hours for all employees, and bolstering administrative support.

Key Milestones:

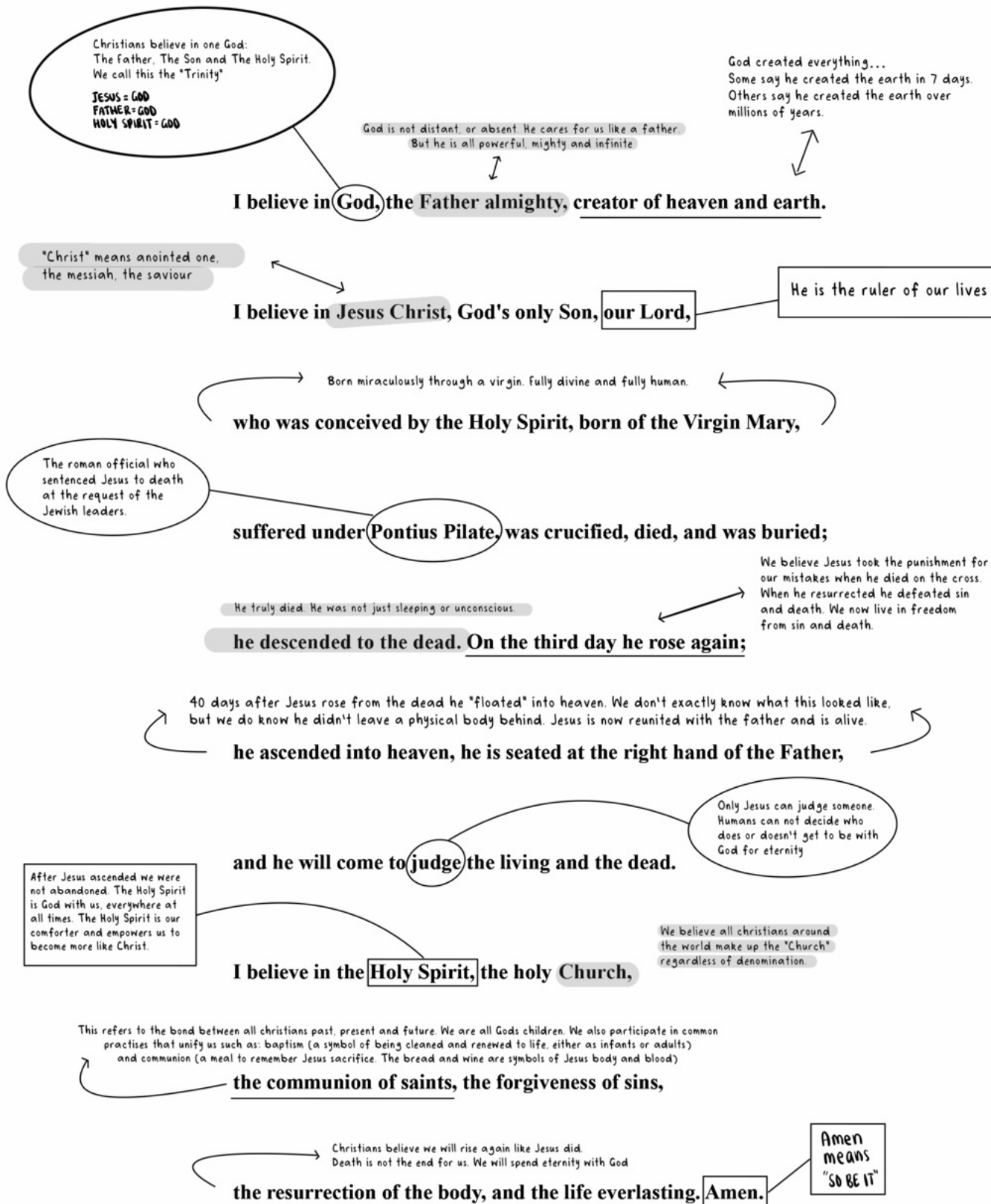
May

- Initiate the launch fund and actively promote it through various channels.
- Secure at least two local partnerships with organisations willing to provide support.
- Establish communication channels with individual donors to encourage ongoing donations.
- If sufficient funding is not achieved, Lewis will volunteer for a period of 6 months.

A New Way July 2024 To December 2024 Draft Budget (6 Months)	
	Budget
Income	
Launch fund	\$40,000
Local partnerships	\$15,000
Regular donations	\$20,000
Total Income	\$75,000
Expenses	
Operational venue hire	\$1,300
Operational equipment*	\$6,244
Operational expenses	\$1,000
Insurance fees	\$1,800
Total staff expenses (0.8FTE: inc leave, tax, superannuation)	\$31,107
Total Expenses	\$41,451
Operating Surplus / Deficit	\$33,549
*Equipment: JBL EON710 10" Two-Way Powered Speaker Pack w / 2 x EON710 & Stands Shure BLX288 / Beta58 DualWireless Mic System K14, SM58, SM58 Yamaha MG10XU 10 Channel Mixer Microphone leads, guitar leads, extension cables Chauvet 4BAR QUAD USB Par Bar 4 Head 28 x 3.5-Watt QUAD LEDs Lighting System Lytworx Warm White Connectable Double Filament LED Party Lights x 4 BenO DLP Projector White EW600 Microphone leads, guitar leads, extension cables	

Statement of Faith

For thousands of years the Apostles Creed has been the benchmark for sound Christian belief. It was written to summarise the core truths found within the Bible. A New Way believes, teaches and promotes every aspect of this ancient Creed.



Parting Note

Thank you for taking the time to read this prospectus.

We acknowledge that the Gospel is ancient truth, and that our vision is firmly based on the foundational principles of the early church which are delineated in scripture. In the tradition of historical reformers, our endeavour, named A New Way, embraces the ethos of an ever-evolving and reforming church. A New Way is not a new religion, or a new understanding of the Bible... It is simply a new way to engage in Christian community and a way to reach more people with the Gospel.

It feels fitting and right to explore and experiment with new methods of sharing the Gospel, especially with the shifting cultural climate and the continuing advancement of technology.

The statistics are plain and clear - we must do something to reach the un-churched and the de-churched. We pray you might dream with us, and support this endeavour.

Financial support can be directed to:

Reference: **A NEW WAY**

Acc: A New Way Offering Account

Acc No: 100020449

BSB: 704922

*Please note the reference is of crucial importance. Inquiries can be made to treasurer@anewway.church

"Behold, I am doing a new thing; now it springs forth, do you not perceive it? I will make a way in the wilderness and rivers in the desert." - Isaiah 43:19

Peace & Favour,
Numbers 6:24-26



Lewis Jonker

A New Way.

For more information

A NEWWAY.

lewis@anewway.church

